



TH Premium RIC LI 19

Guide for Hearing Care Professionals



Made for

Apple iPhone | iPad | iPod

Content

Introduction	3
<hr/>	
Before and after fitting	4
Assembling	4
Activating	4
Charging	5
Connecting	5
Noting the serial number	6
<hr/>	
Replacing the housing	7
Disassembling	7
Assembling	9
<hr/>	
Important safety information	11
General warnings	11
Disposal	12
<hr/>	
Further information	13
Storage periods	13
Symbols used in this document	13

Introduction

This guide is intended for Hearing Care Professionals. It provides important information on hearing instruments with permanently built-in power cells (lithium-ion batteries).



CAUTION

It is important to read this guide, the user guide and the safety manual thoroughly. Follow the safety information to avoid damage or injury.

Before and after fitting

You have to prepare the hearing instruments before you can start fitting.

Assembling

- ▶ A power cell is installed in every hearing instrument on delivery. There is no need to insert a battery.
- ▶ Attach the suitable receiver unit and a suitable ear piece to the hearing instruments. The procedure is the same as for any other of our RIC hearing instruments.



Activating

Before first use or first fitting you have to activate the hearing instruments by putting them into the charger. Wait until the first orange LED lights up.

Note:

- Hearing instruments that are activated and **not used** may discharge faster than hearing instruments that have **not** been activated. Only activate the hearing instruments before first use or first fitting.

Charging

The hearing instruments are pre-charged on delivery. They should have sufficient power for a first fitting session.

We recommend to fully charge the hearing instruments before first fitting and handover to the client. A full charging cycle takes approximately 4 hours.

Follow the operating conditions in both the hearing instrument's and the charger's user guide.

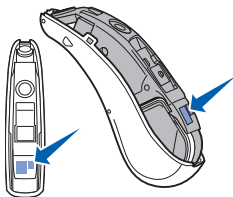
Connecting

Use Noahlink Wireless to fit the hearing instruments wirelessly.

Noting the serial number

Both serial number and performance level are printed on the housing **and** on the frame.

- When you change the housing:
 - Do not re-use the old housing with imprinted serial number.
 - Note down the serial number in the customer's user guide, on the last page. This way you don't have to remove the housing to read the serial number.



- When a hearing instrument is returned from our service:

If you receive a hearing instrument without serial number on the housing, remove the housing and double-check the serial number on the frame. The hearing instrument may have a new serial number. Note this new number down in the customer's user guide, on the last page.

Replacing the housing



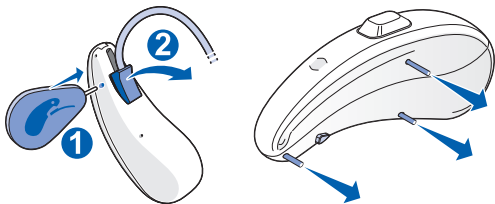
NOTICE

- ▶ This maintenance task must be performed by the Hearing Care Professional.

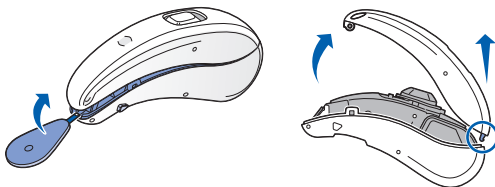
When you disassemble a housing with imprinted serial number, dispose of the housing.

Disassembling

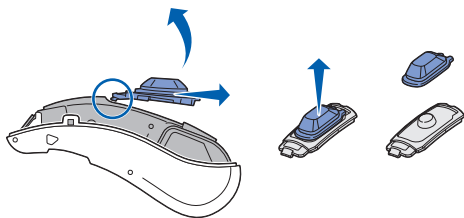
- ▶ Remove the receiver unit and the axles.



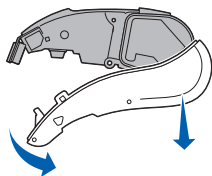
- ▶ Insert the included tool into the front end of the hearing instrument and detach the top housing.



- ▶ Remove the push button.

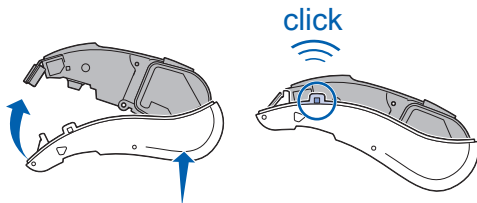


- ▶ Pull off the bottom housing. No tool is required.

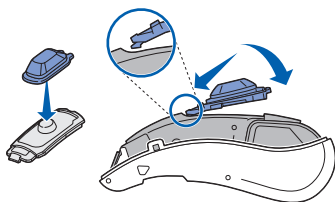


Assembling

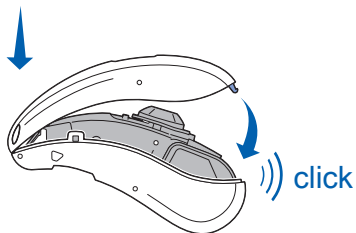
- ▶ Install the bottom housing from back first.



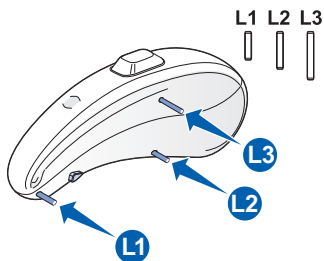
- ▶ Place the push button on the instrument as illustrated in the picture.



- ▶ Install the top housing.



- ▶ Attach the axles. Note the different lengths and diameters of the axles.



- ▶ Attach the receiver unit.



Important safety information

This section contains important safety information regarding the power cell. For more safety information, refer to the safety manual and the user guide supplied with the hearing instruments.



NOTICE

- ▶ Maintenance tasks must be performed by the Hearing Care Professional.

General warnings



WARNING

A power cell (lithium-ion rechargeable battery) is permanently built into your hearing instrument. Incorrect use of the power cell or the hearing instrument can cause the power cell to burst.

Risk of injury, fire or explosion!

- ▶ Follow the safety instructions for power cells in this section.

Do not use the power cell in explosive atmospheres.

Keep each power cell sealed in the original packaging until it is ready to be used.

Do not use power cells that are deformed or obviously damaged.

Do not use power cells when their performance after charging reduces considerably. Remove them and dispose of them.

Avoid short circuiting of power cells: Power cells removed from their packaging should not touch each other.

Handle the power cells with great care:

- Do not drop or damage them (e.g. crush, pierce or open them).
- Protect them from moisture and do not immerse them in water.
- Protect them from extreme heat and sunlight.

Store the power cells in a cool, dry place with good ventilation.

Keep the power cells away from foodstuffs.

Keep the power cells out of reach of children.

Do not place the power cells in your mouth and do not swallow them.

Do not deep-discharge the power cells.



Observe the operating, transport and storage conditions in the hearing instrument's user guide.

Disposal

- ▶ Do not dispose of power cells or hearing instruments in fire or water.
- ▶ Avoid short circuiting of power cells: Prior to disposal, enclose each power cell in a battery container or cover the terminals.

Further information

Storage periods

Unused power cells and hearing instruments lose their charge. Observe the following storage periods to avoid deep-discharge:

- Power cells and hearing instruments that have not been activated or used can be stored up to 15 months after production date. The production date is printed on the power cell: Day (DD), month (MM) and last digit of the year (Y) of production is printed on the power cell.



Example: 21056XX = 21st of May 2016.

- Once a power cell is activated, in order for it to remain in good condition it needs to be charged at least every 6 months.

Symbols used in this document



Points out a situation that could lead to serious, moderate, or minor injuries.



Indicates possible property damage.



Advice and tips on how to handle your device better.

Made for

iPhone | iPad | iPod

"Made for iPhone", "Made for iPad", and "Made for iPod" mean that an electronic accessory has been designed to connect specifically to iPhone, iPad, or iPod, respectively, and has been certified by the developer to meet Apple performance standards. Apple is not responsible for the operation of this device or its compliance with safety and regulatory standards. Please note that the use of this accessory with iPhone, iPad, or iPod may affect wireless performance.

Manufactured for:

TruHearing Inc.
12936 S. Frontrunner Blvd
Draper, UT 84020
United States

Information in this brochure is subject to change without notice.
Copyright © 2018 All rights reserved.

Hearing Instrument Made in Singapore.

Document No. 03740-99T01-7600 EN-USA | D10962733
Order/Item No. 10962733 1.0 22B771 SI/18908-18
Master Rev01, 09.2018
© 10.2018, TrHearing Inc. All rights reserved.

www.truhearing.com